

# FILLING ADAPTER

## Screw-in cartridge

**UMETA**  
A WIGGEN-GROUP COMPANY

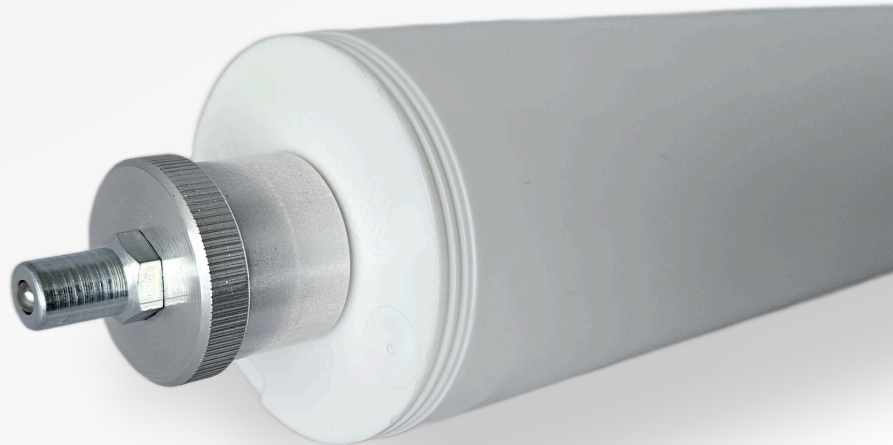
FOR 500g SCREW-IN CARTRIDGES

SUSTAINIBLE SOLUTION

LOWERS YOUR COSTS



- Allows the filling of any 500g screw-in cartridge with TR20 connection thread
- Steel filling valve as for UMETA TWIN-LOCK grease guns
- Made from aluminum
- Also available in anodized colours
- Optionally with laser-signed lettering
- Enables cartridges to be reused:
  - Less waste and therefore more sustainable
  - Lower costs



Article-Nr.: 9126220

Contact us now!

UMETA Germany GmbH & Co. KG

Almestr. 1-3, 33649 Bielefeld / +49 (0)521 - 948 -0 / info@umeta.com

