

**UMETA HYDRAULIC-TYPE GREASE FITTINGS**  
ACCORDING TO SAE J-534



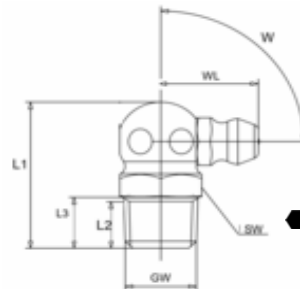
**Type H3**

**Hydraulic-Type Grease Nipples**



- according to SAE J-534
- elbow version C/90°
- standard versions according to SAE are made of steel, zinc-plated, passivated and top coated, head hardened
- salt spray resistance > 72 hours

GW thread  
L1 overall length  
L2 thread length  
L3 shank length  
WL angle length  
W angle  
SW HEX size



GW		1/8" PTF					Ref.- No.:		
L1	L2	L3	WL	W	SW	Steel	SST303	Alemite	
27/32"	3/16"	19/64"	17/32"	90°	7/16" HEX	●	5546024	1613-B	
1 13/16"	5/16"	1 1/4"	17/32"	90°	7/16" HEX	●	5546026	1606-B	
7/8"	7/32"	11/32"	17/32"	90°	7/16" HEX	●	5546088	1923-S	

GW		1/4" - 28 SAE-LT					Ref.- No.:		
L1	L2	L3	WL	W	SW	Steel	SST303	Alemite	
3/4"	7/64"	13/64"	1/2"	90°	3/8" HEX	●	5546044	1911-B1	
3/4"	7/64"	13/64"	1/2"	90°	3/8" HEX	●	5546089	1969-S	