

UMETA HYDRAULIC-TYPE GREASE FITTINGS ACCORDING TO SAE J-534



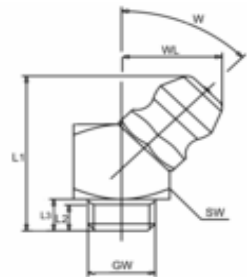
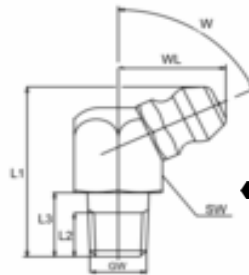
Type H2

Hydraulic-Type Grease Nipples



- according to SAE J-534
- elbow version B - 30°/45°/65°/67°
- optionally available with square or hexagonal body
- standard versions according to SAE are made of steel, zinc-plated, passivated and top coated, head hardened
- salt spray resistance > 72 hours

GW thread
L1 overall length
L2 thread length
L3 shank length
WL angle length
W angle
SW HEX size



GW		1/8" PTF				Ref.- No.:			
L1	L2	L3	WL	W	SW	Steel	SST303	Alemite	
29/32"	19/64"	19/64"	11/32"	30°	7/16" HEX	5546152		1611-B	
29/32"	19/64"	19/64"	11/32"	30°	7/16" HEX		5546153	1921-S	
57/64"	3/16"	19/64"	29/46"	45°	7/16" HEX	5546017		1688-B	
27/32"	3/16"	19/64"	1/2"	65°	7/16" HEX	5546018		1612-B	
1 7/32"	3/16"	9/16"	1/2"	65°	7/16" HEX	5546020		1623-B	
2 3/4"	11/32"	2 1/4"	1/2"	65°	3/8" HEX	5546022		1649-B	
61/64"	11/32"	11/32"	1/2"	67°	7/16" HEX		5546090	1922-S	

GW		1/4" - 28 SAE-LT				Ref.- No.:			
L1	L2	L3	WL	W	SW	Steel	SST303	Alemite	
13/16"	7/64"	13/64"	13/32"	45°	3/8" HEX	5546040		1637-B1	
25/32"	13/64"	19/64"	15/32"	65°	3/8" HEX	5546042		3010-B1	
13/16"	13/64"	13/64"	19/32"	45°	3/8" HEX		5546085	1968-S	

GW		1/4"-28 UNF-2A				Ref.- No.:			
L1	L2	L3	WL	W	SW	Steel	SST303	Alemite	
39/64"	5/64"	1/8"	13/32"	45°	23/64" SQ	5546108		1770-B1	