

HYDRAULIC GREASE NIPPLES WITH SELF-FORMING THREAD ACCORDING TO SAE J-534



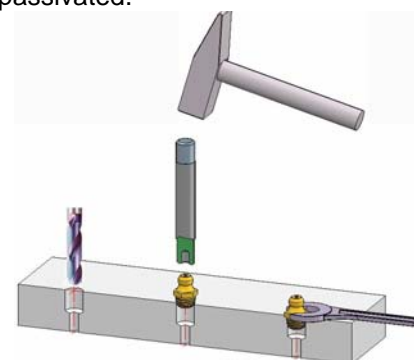
VERSIONS

For safety reasons and in order to avoid abrasion wear, the standard for SAE-grease fittings demands a specific surface hardness of 83 HR15 N minimum according to Rockwell hardness test procedure. Furthermore, a particularly wide flank angle of 90° at the thread is stipulated therein. For a better visual distinction, UMETA self-forming grease nipples are yellow passivated. Upon request, they are also available in another surface colour, e. g. blue passivated = silver coloured.

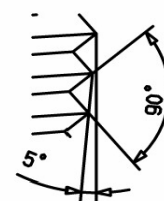
MOUNTING INSTRUCTIONS

The exact size of the core hole depends on the material and must be determined by mounting tests. The consistency of the receiving material is decisive.

The standard gauge for the installation bore diameter of 0.4-0.5 mm (0.02") below nominal width have proved in daily use.



$X = M \ 10:1$



flank angle (x)

OPERATING INSTRUCTIONS

As suitable lubricating nozzle, we recommend our hydraulic couplers.



Type H1/S

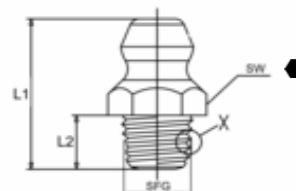
Hydraulic-Type Grease Nipples with Self-Forming Thread



- according to SAE J-534
- straight version A/180°
- with self-forming thread, tapered
- standard version made of steel, according to SAE hardened, yellow passivated and top coated
- salt spray resistance > 72 hours



- SFG self-forming thread (SFT)
- L1 overall length
- L2 thread length
- SW HEX size
- X flank angle



SFG	1/8" Special Taper Pipe Thread			Ref.- No.:	
L1	L2	for bore-Ø	SW	Steel	Alemite
5/8"	15/16"	0.373-0.380"	7/16" HEX	5546052	1720-B

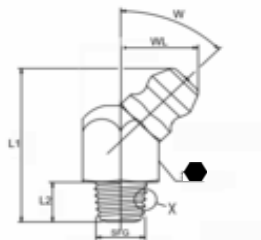
SFG	1/4" - 28 Special Taper Thread			Ref.- No.:	
L1	L2	for bore-Ø	SW	Steel	Alemite
37/64"	13/64"	0.230"-0.235"	5/16" HEX	5546046	3038-B

Type H2/S Hydraulic-Type Grease Nipples with Self-Forming Thread



- according to SAE J-534
- elbow version B - 45°/65°
- with self-forming thread, tapered
- standard version made of steel, according to SAE hardened, yellow passivated and top coated
- salt spray resistance > 72 hours

SFG self-forming thread (SFT)
L1 overall length
L2 thread length
WL angle length
W angle
SW HEX size
X flank angle



SFG 1/8" Special Taper Pipe Thread						Ref.- No.:	
L1	L2	WL	W	for bore-Ø	SW	Steel	Alemite
3/4"	13/64"	1/2"	65°	0.373-0.380"	7/16" HEX	5546054	1722-B

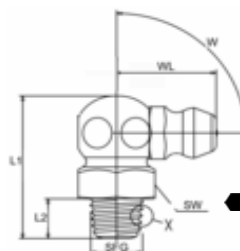
SFG 1/4" - 28 Special Taper Thread						Ref.- No.:	
L1	L2	WL	W	for bore-Ø	SW	Steel	Alemite
13/16"	13/64"	25/64"	45°	0.230"-0.235"	3/8" HEX	5546048	3053-B

Type H3/S Hydraulic-Type Grease Nipples with Self-Forming Thread



- according to SAE J-534
- elbow version C/90°
- with self-forming thread, tapered
- standard version made of steel, according to SAE hardened, yellow passivated and top coated
- salt spray resistance > 72 hours

SFG self-forming thread (SFT)
L1 overall length
L2 thread length
WL angle length
W angle
SW HEX size
X flank angle



SFG 1/8" Special Taper Pipe Thread						Ref.- No.:	
L1	L2	WL	W	for bore-Ø	SW	Steel	Alemite
49/64"	13/64"	17/32"	90°	0.373-0.380"	7/16" HEX	5546056	1723-B

SFG 1/4" - 28 Special Taper Thread						Ref.- No.:	
L1	L2	WL	W	for bore-Ø	SW	Steel	Alemite
3/4"	13/64"	1/2"	90°	0.230"-0.235"	3/8" HEX	5546050	3054-B