

UMETA HYDRAULIC-TYPE GREASE NIPPLES - DRIVE-IN VERSION (USA VERSION)



VERSIONS

Drive-in fittings as standard version are made of steel, case-hardened, zinc-plated, passivated and top coated.

MOUNTING INSTRUCTIONS

The exact size of the core hole depends on the material and must be determined by mounting tests.

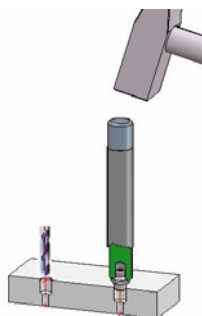
The standard gauge for the installation bore diameter corresponds to the nominal width of the serrated ridge-Ø.

OPERATING INSTRUCTIONS

Since this type of grease nipple is only driven in, it may get lo

- strong vibrations
- high back-pressure when greasing with automatic guns
- pulling off the hydraulic coupler.

Drive-in type hydraulic grease nipples should only be lubricated with a hydraulic nozzle.



Type H1a

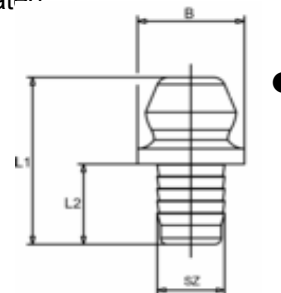


Hydraulic-Type Grease Nipples - Drive-in Type



- straight version A/180°
- with serrated ridge
- standard version made of steel, according to SAE hardened, zinc plated, passivated and top coated
- salt spray resistance > 72 hours

SZ ridge shank Ø ≈ bore Ø
L1 overall length
L2 shank length
B collar Ø



SZ		3/16"		Ref.- No.:		
L1	L2	SZ	B		Steel	Alemite
15/32"	11/64"	3/16"	5/16" Ø	●	* 5546060	3005
31/64"	7/32"	3/16"	9/32" Ø	●	* 5546062	3006
33/64"	1/4"	3/16"	5/16" Ø	●	5546064	1728-B
5/8"	1/4"	3/16"	5/16" Ø	●	* 5546066	1633

SZ		1/4"		Ref.- No.:		
L1	L2	SZ	B		Steel	Alemite
35/64"	1/4"	1/4"	11/32" Ø	●	5546068	1743-B
9/16"	17/64"	1/4"	11/32" Ø	●	* 5546070	321381
15/32"	1/8"	1/4"	11/32" Ø	●	* 5546072	1952

SZ		5/16"		Ref.- No.:		
L1	L2	SZ	B		Steel	Alemite
35/64"	1/4"	5/16"	3/8" Ø	●	5546074	1608-B
5/8"	7/32"	5/16"	3/8" Ø	●	* 5546076	1699

SZ		6.35 mm, 1/4" Ø		Ref.- No.:		
L1	L2	SZ	B		Steel	Alemite
15 mm	6.3 mm	6.35 mm, 1/4"	8 mm Ø	●	5241043	1666

SZ		3/8"		Ref.- No.:		
L1	L2	SZ	B		Steel	Alemite
37/64"	7/32"	3/8"	7/16" Ø	●	* 5546078	1666

* no ball check

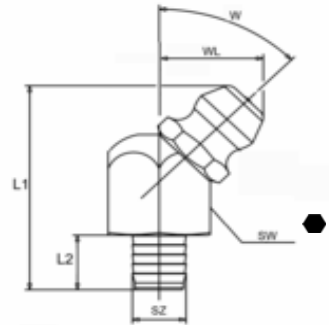
Type H2a

Hydraulic-Type Grease Nipples - Drive-in Type



- elbow version B/45° /67°
- with serrated ridge
- standard version made of steel, according to SAE zinc-plated, passivated and top coated, head hardened
- salt spray resistance > 72 hours

SZ ridge shank Ø ≈ bore Ø
L1 overall length
L2 shank length
WL angle length
W angle
SW HEX size



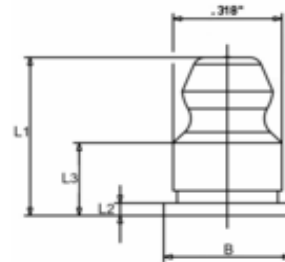
SZ		3/16"		Ref.- No.:				
L1	L2	WL	W	SZ	SW		Steel	Alemite
53/64"	7/32"	13/32"	45°	3/16"	3/8" HEX	●	5546080	1992-B1
45/64"	7/32"	1/2"	65°	3/16"	3/8" HEX	●	5546082	1646-B1

Hydraulic-Type Grease Nipples - Rivet Type



- designed for mounting on the back side of thin-walled sheet metal
- standard version made of steel, according to SAE hardened, zinc plated, passivated and top coated
- salt spray resistance > 72 hours

B collar Ø
L1 overall length
L2 collar height
L3 installation depth
B Ø recommended hole size



B Ø 5/16"

					Ref.- No.:	
L1	L2	L3	for bore-Ø B		Steel	Alemite
1/2"	5/128"	15/64"	5/16"	3/8" Ø	●	5546122 1675-B