

UMETA HYDRAULIC-TYPE GREASE FITTINGS ACCORDING TO SAE J-534



The SAE-standard for hydraulic-type grease fittings requires a tapered thread.
The standard head-Ø is 6.6 (+/- 0.3) mm / 0.26" (+/- 0.012").

OPERATING INSTRUCTIONS

As suitable lubricating nozzle, we recommend our hydraulic couplers.



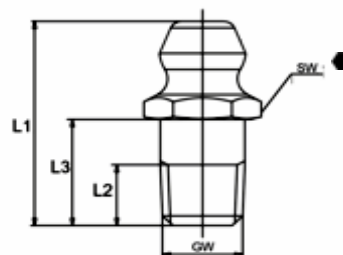
Type H1

Hydraulic-Type Grease Nipples



- according to SAE J-534
- straight version A/180°
- standard versions according to SAE are made of steel, hardened, zinc plated, passivated and top coated
- salt spray resistance > 72 hou

GW thread
L1 overall length
L2 thread length
L3 shank length
SW HEX size



GW		1/8" PTF		Ref.- No.:			
L1	L2	L3	SW	Steel	SST303	Alemite	
11/16"	5/32"	19/64"	7/16" HEX	5546006		1610-BL	
9/16"	5/32"	15/64"	7/16" HEX	5546008		1644-B	
1 1/4"	5/16"	25/32"	7/16" HEX	5546010		1607-B	
1 3/4"	5/16"	1 17/64"	7/16" HEX	5546012		1669-B	
2 5/8"	5/16"	2 3/16"	3/8" HEX	5546014		1684-B	
3/4"	3/16"	5/16"	7/16" HEX		5546086	1961-S	
1"	5/16"		1/2" HEX	*1) 5546016		1618-B	

GW		1/4" PTF		Ref.- No.:			
L1	L2	L3	SW	Steel	SST303	Alemite	
7/8"	15/64"	27/64"	9/16" HEX	5546028		1627-B	
7/8"	25/64"	27/64"	19/32" HEX		5546154	-	

GW		1/4" - 28 SAE-LT		Ref.- No.:			
L1	L2	L3	SW	Steel	SST303	Alemite	
35/64"	7/64"	3/16"	5/16" HEX	5546030		1641-B	
11/16"	13/64"	23/64"	5/16" HEX	5546032		1652-B	
31/32"	13/64"	5/8"	5/16" HEX	5546034		1680-B	
1 1/8"	13/64"	25/32"	5/16" HEX	5546036		1698-B	
1 5/8"	13/64"	1 9/32"	5/16" HEX	5546038		3014-B	
35/64"	7/64"	3/16"	5/16" HEX		5546087	1966-S	

GW		1/4"-28 UNF-2A			Ref.- No.:		
L1	L2	L3	SW	Steel	SST303	Alemite	
33/64"	5/64"	5/32"	9/32" HEX ●	5546106		1792-B	

GW		3/8" - 18 NPTF			Ref.- No.:		
L1	L2	L3	SW	Steel	SST303	Alemite	
20 mm	8 mm		43/64" HEX ●	*2) 5547001			

GW		M 6 x 1.0			Ref.- No.:		
L1	L2	L3	SW	Steel	SST303	Alemite	
41 mm	6 mm	31 mm	7mm HEX ●	5313742			

GW		6/40" UNF-2A			Ref.- No.:		
L1	L2	L3	SW	Steel	SST303	Alemite	
1/2"	7/64"	1/8"	1/4" HEX ●	*3) 5546507		3018	

GW		10/32" UNF-2A			Ref.- No.:		
L1	L2	L3	SW	Steel	SST303	Alemite	
1/2"	7/64"	1/8"	1/4" HEX ●	*3) 5546503		3016	

Type H1

Hydraulic-Type Grease Fitting with pin valve, leakproof

GW		1/8" PTF			Ref.- No.:		
L1	L2	L3	SW	Steel	SST303	Alemite	
3/4"	17/64"	5/16"	7/16" HEX ●	5546110		1650	

- *1) female thread
- *2) molybdän-surface finish
- *3) no ball check