

■ UMETA BUTTON-HEAD GREASE FITTINGS ACCORDING TO SAE J-534



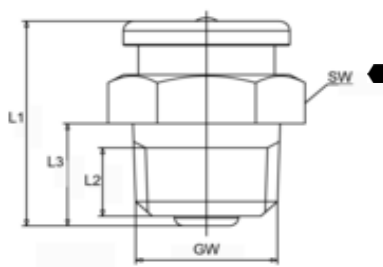
Type M1

Button-Head Grease Nipples



- head Ø 15.5 mm (5/8")
- according to SAE J-534
- straight version A/180°
- standard versions according to SAE are made of steel, hardened, zinc plated, passivated and top coated
- salt spray resistance > 72 hours

GW thread
L1 overall length
L2 thread length
L3 shank length
SW HEX size



GW		1/8" PTF			Ref.- No.:		
L1	L2	L3	SW	Steel	SST303	Alemite	
3/4"	3/16"	11/32"	5/8" HEX	●	5546112	1184-B	
GW		1/4" NPTF			Ref.- No.:		
L1	L2	L3	SW	Steel	SST303	Alemite	
53/64"	17/64"	27/64"	5/8" HEX	●	* 5546114	A1186	
53/64"	17/64"	27/64"	5/8" HEX	●	5546116	1186-B	

* with plunger check

Type M1

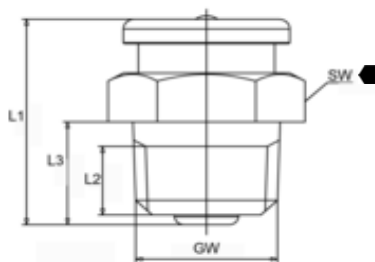
- according to ISO 2768 - m
- stainless steel

Button-Head Grease Nipples



- head Ø 15.5 mm (5/8")
- according to ISO 2768 - m
- straight version A/180°
- made of stainless steel 1.4305 ~ ASTM 303 (V2A)

GW thread
L1 overall length
L2 thread length
L3 shank length
SW HEX size



GW	1/8" PTF			Ref.- No.:			
L1	L2	L3	SW	Steel	SST303	Alemite	
18 mm	4.8 mm	7.5 mm	17mm HEX	●	5547020	-	

GW	1/4" - 18 NPTF			Ref.- No.:			
L1	L2	L3	SW	Steel	SST303	Alemite	
21 mm	6.75 mm	10.7 mm	17mm HEX	●	5547021	-	

GW	3/8" - 18 NPTF			Ref.- No.:			
L1	L2	L3	SW	Steel	SST303	Alemite	
23.5 mm	13 mm	13 mm	19mm HEX	●	5547022	-	

Type M22

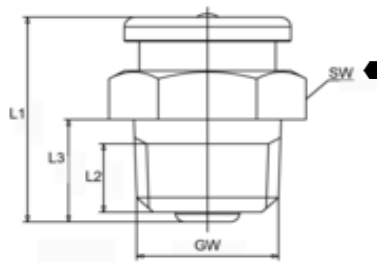


Button-Head Grease Nipples with plunger check



- head Ø 21.9 mm (7/8")
- according to SAE J-534
- straight version A/180°
- standard versions according to SAE are made of steel, hardened, zinc plated, passivated and top coated
- salt spray resistance > 72 hours

GW thread
L1 overall length
L2 thread length
L3 shank length
SW HEX size



GW	1/2" N.PTF			Ref.- No.:			
L1	L2	L3	SW	Steel	SST303	Alemite	
1 1/6"	25/64"	1/2"	7/8" HEX	●	5546120	1820-1	