

UMETA FLUSH-TYPE GREASE FITTINGS (USA VERSION)



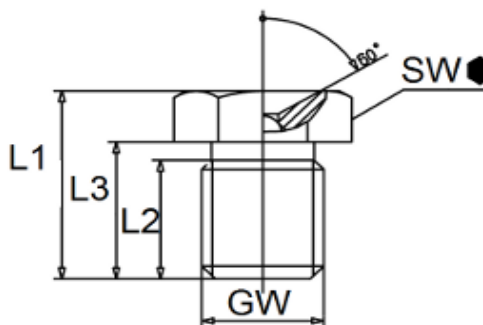
Type D1

Flush-Type Grease Nipples



- straight version A/180°
- made of steel, zinc-plated, passivated and top coated
- salt spray resistance > 72 hours

GW thread
L1 overall length
L2 thread length
L3 shank length
SW HEX size



GW	1/4" - 28 NF			Ref.- No.:	
L1	L2	L3	SW	Steel	Alemite
13/32"	3/16"	19/64"	5/16" HEX	5546130	1851

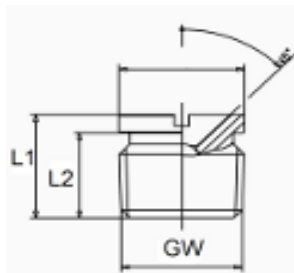
Type DV1

Flush-Type Grease Nipples

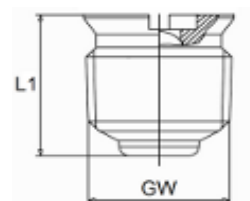


- without collar, with slot for screwdriver
- for even mounting without projection
- straight version A/180°
- made of steel, zinc-plated, passivated and top coated
- salt spray resistance > 72 hours

GW	1/8" NPTF			Ref.- No.:	
L1	L2	Steel	Alemite		
23/64"	19/64"	5546124	1815		
17/32"		5546126	1452		

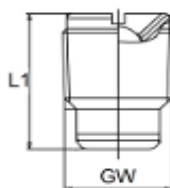


5546124



5546128

GW	1/4" NPTF			Ref.- No.:	
L1	L2	Steel	Alemite		
9/16"		5546128	Z741-A		



5546126

GW thread
L1 overall length
L2 thread length