

## Type D2a

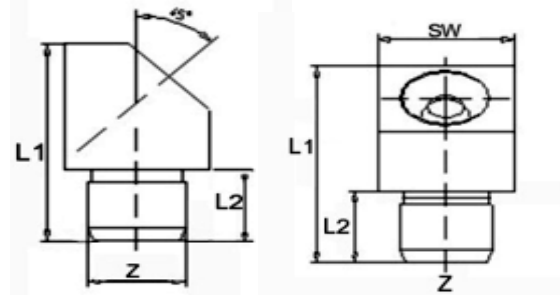
## Flush-Type Grease Nipples

## - Drive-in Type



- according to DIN 3405
- elbow version B/45°
- drive type with plain shank
- standard versions according to DIN are made of steel, zinc-plated and passivated

Z shank Ø  
L1 overall length  
L2 shank length  
SW HEX size



(all measures in mm)

Z	6 mm Ø		Ref.- No.:					
L1	L2	W	SW		Steel	Brass	SST303	SST316L
15	5,5	45°	9 mm SQ.	■	3204586			

Z	8 mm Ø		Ref.- No.:					
L1	L2	W	SW		Steel	Brass	SST303	SST316L
15	5,5	45°	9 mm SQ.	■	3204588			

Z	10 mm Ø		Ref.- No.:					
L1	L2	W	SW		Steel	Brass	SST303	SST316L
15	5,5	45°	11 mm SQ.	■	3204789			

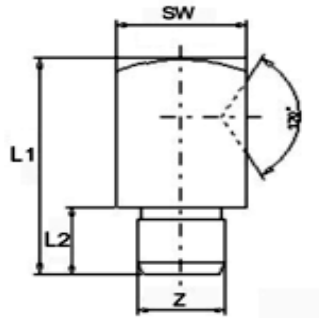
**Type D3a**

**Flush-Type Grease Nipples - Drive-in Type**



- according to DIN 3405
- elbow version C/90°
- drive type with plain shank
- standard versions according to DIN are made of steel, zinc-plated and passivated

Z shank Ø  
L1 overall length  
L2 shank length  
SW HEX size



(all measures in mm)

<b>Z</b>	<b>6 mm Ø</b>							
<b>Ref.- No.:</b>								
<b>L1</b>	<b>L2</b>	<b>W</b>	<b>SW</b>		<b>Steel</b>	<b>Brass</b>	<b>SST303</b>	<b>SST316L</b>
18	5,5	90°	9 mm SQ.	■	3304586			

<b>Z</b>	<b>8 mm Ø</b>							
<b>Ref.- No.:</b>								
<b>L1</b>	<b>L2</b>	<b>W</b>	<b>SW</b>		<b>Steel</b>	<b>Brass</b>	<b>SST303</b>	<b>SST316L</b>
18	5,5	90°	9 mm SQ.	■	3304588			

<b>Z</b>	<b>10 mm Ø</b>							
<b>Ref.- No.:</b>								
<b>L1</b>	<b>L2</b>	<b>W</b>	<b>SW</b>		<b>Steel</b>	<b>Brass</b>	<b>SST303</b>	<b>SST316L</b>
18	5,5	90°	11 mm SQ.	■	3304789			